



RESELLERS

AFILNET
Cloud Marketing & Communications

www.afilnet.com



*Afilnet is the ally of
your company to
attract and retain
customers.*



AFILNET - CLOUD MARKETING & COMMUNICATIONS

At Afilnet we aim to help companies optimize communication with their customers through automated multichannel marketing.

WE HELP YOUR COMPANY TO:

- ☑ Automate marketing and communication processes.
- ☑ Carry out personalized communication with leads and clients.
- ☑ Reduce the time and cost of acquiring new customers, improving your ROI.
- ☑ Promote your brand through different channels.
- ☑ Improve the security of your services.

At Afilnet we focus every day on optimizing three fundamental concepts in order to offer the best service for your company:

Connectivity: Telecommunications and digital marketing united in the same platform to offer the maximum connectivity and reach possible. We unify digital channels on an omnichannel platform.

Automation: Time is one of the most precious values, for this reason we believe that the automation of the different marketing processes is one of the keys when it comes to achieving the highest profitability.

Powerful: Many connections and integrations with our API to boost your systems and communication media.

THE RESELLER PROGRAM



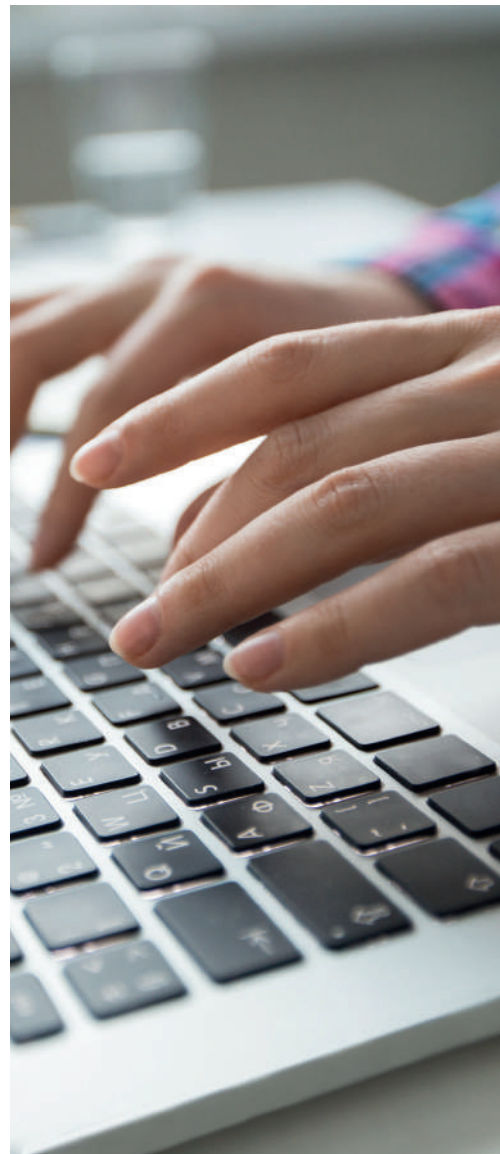
The reseller program is designed for companies with the need to offer telecommunications and marketing services to their client base, whether they are large companies, multi-site corporations and / or franchises that need to segment services by location.



For this, Afilnet offers you a configurable reseller platform for customer management, as well as an omnichannel platform with the most advanced communication and marketing channels in the digital environment.



In this way, we help to enhance communication with your clients so that they obtain the greatest benefit in their marketing campaigns, notifications or B2B and B2C communications.



SERVICE FEATURES



Reseller price for all channels: A competitive price so you can get the highest ROI possible.



Communication channels: SMS, Voice, Email, Instant Messaging.



Cloud services: They add functionality to communication channels, expanding their capabilities and allowing services or files hosted in the cloud to be attached to their messages.



Client / sub-accounts management: Manage and register as many clients or accounts as you need within your reseller module.

- Assignment of clients in agenda by name, company and email.
- Assignment of rates and credits for clients.
- Direct access to customer accounts and editing.



Many integrations with our API.

- Compatible with languages: JAVA / PHP / .NET / Android
- HTTP GET / POST connections



Advanced and intuitive management panel that will allow you to perform tasks easily and comfortably

- Management of customer data, billing, payments, etc.

WHITE LABEL

Within the reseller service there is also the option of a white label. This extension of the reseller service is designed so that you can offer the same services and channels that Afilnet makes available under its own name, domain and brand.

Characteristics:

- White label style and configuration:**
 - > Logo settings and interface style for editing.
- Gateway data:** domain integration and gateway integration.
- Management of rates and online payments:**
 - > Selection of editable payment methods on the platform.

COMMUNICATION CHANNELS

(SENT / RECEPTION)



SMS:

The most effective tool when carrying out marketing campaigns and sending notifications due to its high opening rate and speed of delivery.

Characteristics:

- Global coverage with direct routes to all countries.
- Alphanumeric senders.
- Possibility of concatenating messages.
- Compatible with Cloud Services.
- Custom shipments by recipient.
- Shipments scheduled by date per campaign or individually.



VOICE SMS:

An ideal channel for quick notifications since it has a wide scope because it is compatible with both landlines and mobile numbers.

Characteristics:

- Global coverage.
- Unlimited voice messages in time.
- Custom shipments.
- Shipments scheduled by date, by campaign or individually
- Custom shipments by recipient.



EMAIL:

One of the classic channels for sending promotions and newsletters.

Characteristics:

- Custom shipments by recipient.
- Compatible with Cloud Services.



SOCIAL NETWORKS:

Afilnet provides you with an efficient solution so that you can connect with your followers on Social Networks and enhance your campaigns by simplifying actions.

Through our platform you can make the publications on different Social Networks and program them in a way that can automate the processes of the publications.

Compatible with social networks:



INSTANT MESSAGING:

Afilnet provides you with connection to the main instant messaging applications / websites.

Compatible with messaging services:



THANK YOU
